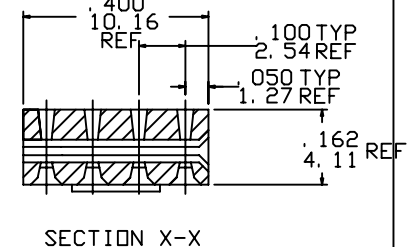
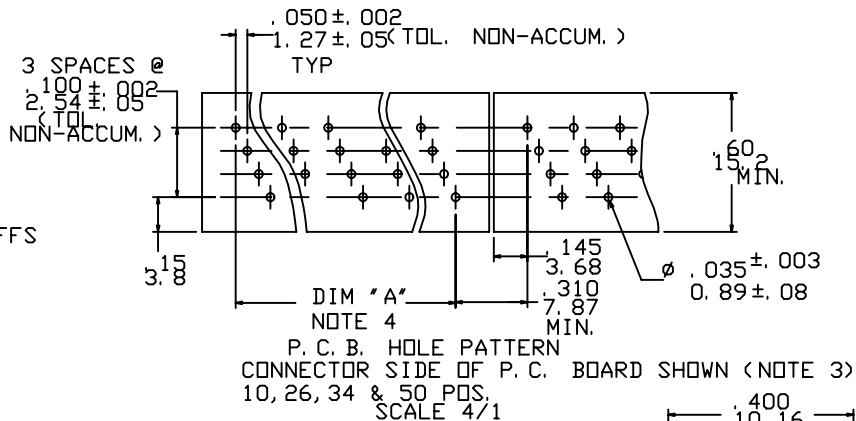
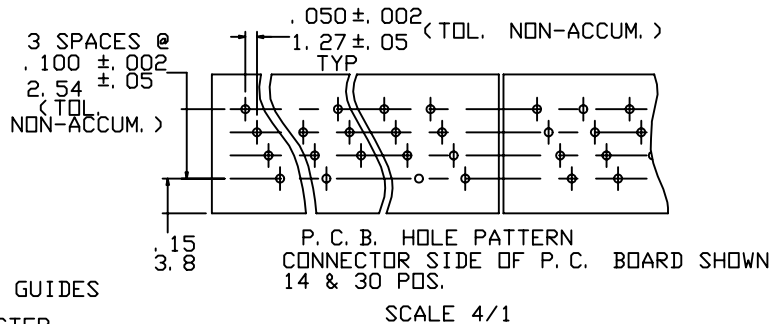
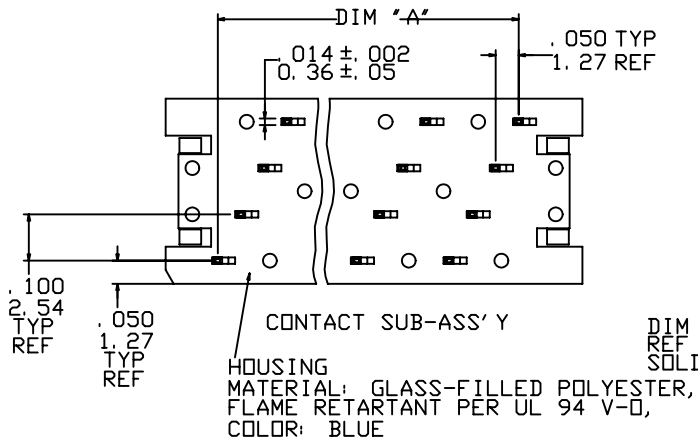
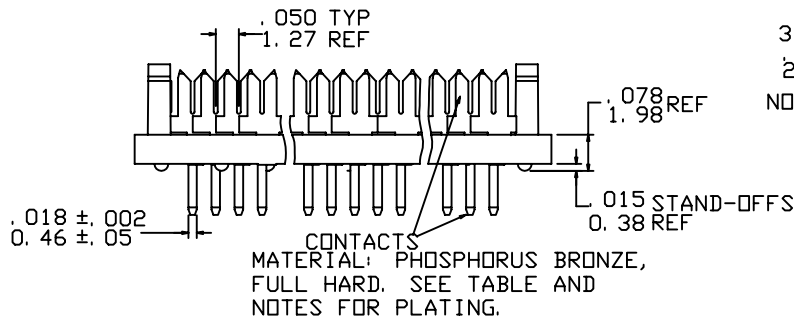
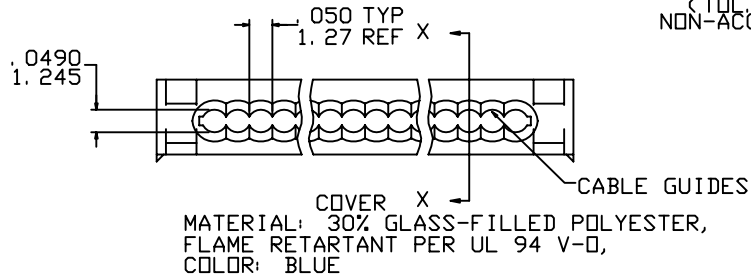


Tous droits strictement réservés. Reproduction ou communication à des tiers interdite sous quelque forme que ce soit sans autorisation écrite du propriétaire.  
 Property of © FCI ELECTRONICS. Copyright © FCI ELECTRONICS INC. Droits de reproduction FCI ELECTRONICS INC.



All rights strictly reserved. Reproduction or issue to third parties in any form whatever is not permitted without written authority from the proprietor.  
 Property of © FCI ELECTRONICS. Copyright © FCI ELECTRONICS INC.

PRODUCT NO.  
SEE TABLE



mat'l. code				tolerances unless otherwise specified		CUSTOMER COPY	FCI www.fciconnect.com	
ltr	ecn no	dr	date	linear	angles			
P	V11058	JM	6/12/91	.XX ±.01	0° ±2°	projection	title QUICKIE P.C.B. CONNECTOR 10,14,26,30,34, & 50 POS. product family size/dwg no	
R	V50805	LSS	7/5/95	.XXX ±.005		INCH/MM		code -
S	N05-0123	ZC	5/9/05	.XXXX ±.0020				
T	N07-0199	WG	08/27/07	0° ±2°				
				dr	J.MUSTARD	6/12/91	A 65495	
				enr	M.SMYK	6/12/91		
				chr	W.FUNK	6/12/91		
				appd	M.SMYK	6/12/91		
sheet index	revision sheet	T	T					
		1	2					

